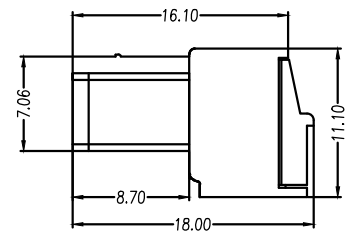
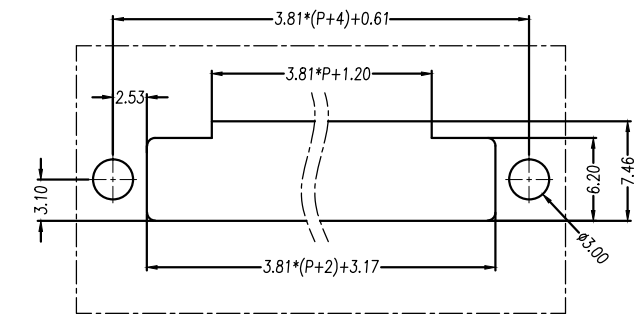
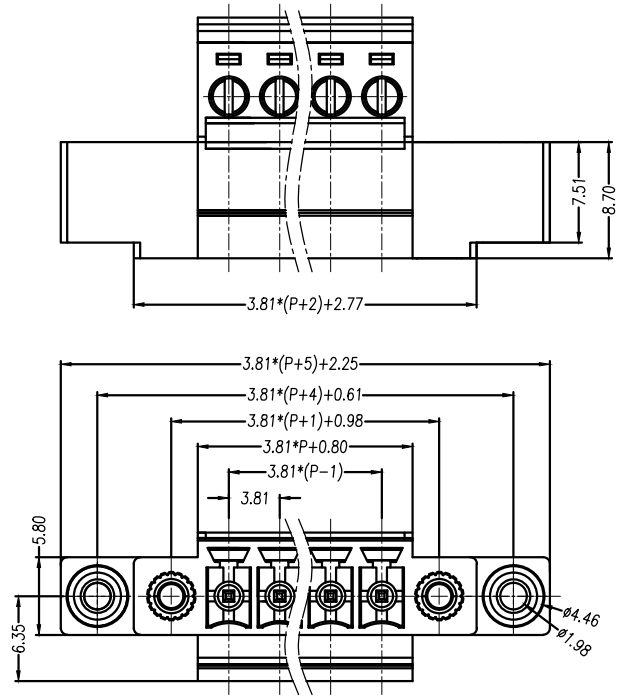
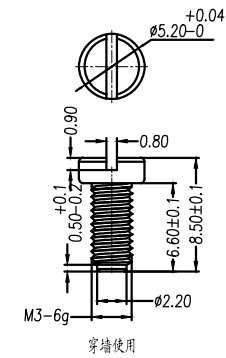


REVISION		RECORD		
REV.	CONTENT	TITLE	MOD.	DATE
△		初版发行		



1. Voltage Rating: 300V, Current Rating: 8A
2. PITCH: 3.81mm
3. Insulation Withstands Voltage: AC2500V/min
4. Insulation Resistance: 500MΩ or more at DC500V
5. Using Temperature Range: -40° C ~ +105° C
6. Suitable Electric Wire: 28-16AWG
7. Screw Torque Value: 0.4Nm

- 技术要求:
1. 额定电压: 300V, 额定电流: 8A
 2. 间距: 3.81mm
 3. 耐压值: AC 2500V/min
 4. 绝缘电阻: 500兆欧
 5. 使用条件: -40° ~ +105°
 6. 适用线规: 28-16AWG
 7. 螺丝扭力: 0.4Nm



	pitch dimension			Nominal dimension					—
	over 0 to 6	over 6 to 10	over 10 to 24	over 0 to 30	over 30 to 60	over 60 to 100	over 100 to 150	over 150 to 300	
variable range	0 to 6	6 to 10	10 to 24	0 to 30	30 to 60	60 to 100	100 to 150	150 to 300	□
Tolerance	±0.1	±0.15	±0.25	±0.2	±0.3	±0.5	±0.7	±1.0	0.05/10

NO.	NAME OF PART	NO. OF PART	QTY	MATERIAL	NOTES
8	LG636 (一字平头螺丝)	SPOYA306601V	2	碳钢	三价铬钝化彩锌
7	LZ1HM-7.62耳朵螺母	SM00B300000V	2	黄铜	
6	LC1-5.08-螺母	SM0B250000V	2	黄铜	
5	LC1-3.81-螺丝	SPOYA204801V	P	碳钢	三价铬钝化彩锌
4	LC10-3.81-方针	1052B0001AV	P	紫铜	镀雾锡
3	LC1-3.81-铜方块	F1A0BLC3813V	P	黄铜	镀镍
2	LC1-3.81-盖子	1002COVXXAV	1	PA66-V0	
1	LC10MGC1-3.81-本体	1162M40XXAV	1	PA66-V0	
DES.	WYY	DATE	2019/12/30	UNITS	mm
CHK.	DATE	SIZE	A4	THIRD ANGLE PROJECTION	
APP.	DATE	SCALE	1:1	DWG NO.	SP-2-1002002
上海有乐电气有限公司 Shanghai YouLe Electric CO., LTD				TITLE	LC10MGC1-3.81-XXP-1Y-00A
				TITLE	LC10MGC1-3.81-成品
				SHEET	1 / 1
				REV: V0	