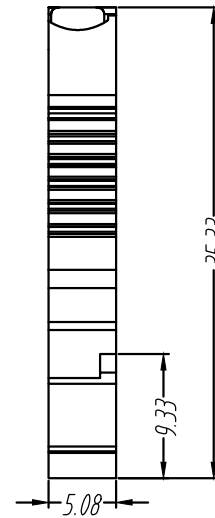
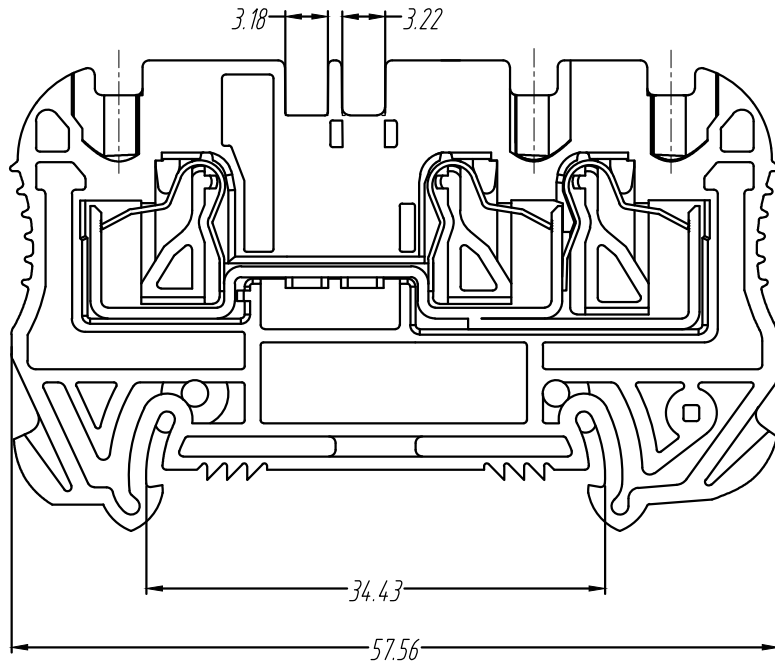
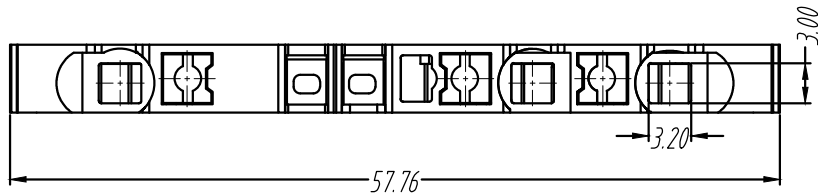


REVISION RECORD			
REV.	CONTENT	MOD.	DATE
△	初版发行		



NOTES:

Voltage Rating: 800V, Current Rating: 24A
 PITCH: 5.08mm
 Insulation Withstands Voltage: AC2500V/min
 Insulation Resistance: 500MΩ or more at DC500V
 Using Temperature Range: -60°C ~ +110°C
 Suitable Electric Wire: 24-12 AWG

技术要求:

1. 额定电压: 800V, 额定电流: 24A
2. 间距: 5.08mm
3. 耐电压值: AC2500V/min
4. 绝缘阻抗: 500MΩ / DC500V
5. 使用条件: -60° - +110°
6. 适用线规: 24-12 AWG

	pitch dimension			Nominal dimension					—
	over 0 to 6	over 6 to 10	over 10 to 24	over 0 to 30	over 30 to 60	over 60 to 100	over 100 to 150	—	
variable range	0 to 6	6 to 10	10 to 24	0 to 30	30 to 60	60 to 100	100 to 150	◇	
Tolerance	±0.1	±0.15	±0.25	±0.2	±0.3	±0.5	±0.7	±1.0	○

4	LD1-2.5弹片	6LD1B0001AV	3	SUS301	
3	LD1-2.5按钮	6LD1A400204V	3	PA66-V0	橘黄
2	UD2.5-4导电件	60UD3BDD024AV	1	紫铜	镀亮锡
1	UD2.5-4主体	60UD3A100240V	1	PA66	灰色
NO.	NAME OF PART	NO. OF PART		MATERIAL	NOTES
DES.	WYY	DATE	2022/12/05	UNITS	mm
CHK.		DATE		SIZE	A4
APP.		DATE		SCALE	1:1
				THIRD ANGLE PROJECTION	SHEET
				⊕	1 of 1
				DWG NO.	SP-1153A01
				REV:	V0
上海有乐电气有限公司 Shanghai YouLe Electric CO.,LTD				TITLE	UD2.5-3-110-00A UD2.5-3-110-00A产品